

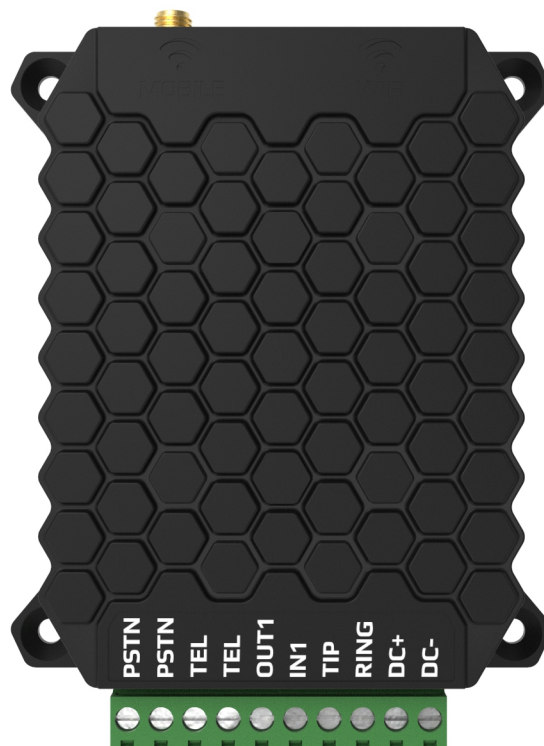


SECURECOM

SC-4G+PSTN

Remotely manageable alarm monitoring communicator
with LTE/EDGE primary and PSTN backup connection

Additional information to SC-2G/SC-4G installation manual



Information

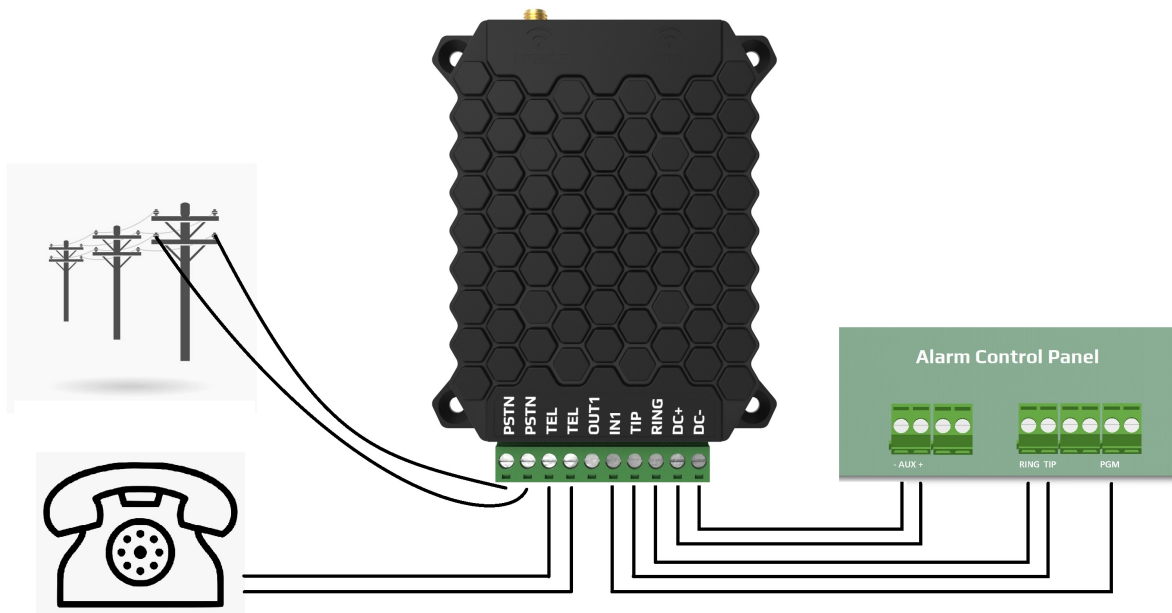
The SC-4G+PSTN devices are a modern remote monitoring communicator which operates on the 4G/3G/2G mobile network, converts the Contact ID signals of alarm control panels into SIA DC-09 digital format and forwards to the predefined remote monitoring station's receivers.

In case of the mobile network connection is defected or the IP based monitoring receivers are unavailable, the communicator provides a secondary option for report sending, switching to PSTN network connection.

The incoming phone line voltage is ended on TEL outputs, and the landline is only available for the alarm system. If any of the set receivers (MS1 or MS2) is available again, the communicator switches back to "normal operation", and the communication line for alarm panel is provided via mobile network. In case of device failure or power supply loss, the basic communication line will be PSTN.

The condition of PSTN line usage is that the phone line must be connected!

Wiring Diagram



Connector pinout

PSTN / PSTN	Incoming land line
TEL / TEL	Outgoing land line to PBX
OUT1	Remotely controllable relay output (to DC-) NO type
IN1	Contact input (to DC-) with configurable report codes
TIP / RING	Emulated communication line for alarm panel
DC+	Power supply (DC 9-30V @ max. 500mA)
DC-	Power supply negative